



FOR 3214L: Fire Ecology & Management Lab

SCHOOL OF FOREST, FISHERIES, & GEOMATICS SCIENCES
UNIVERSITY OF FLORIDA
SPRING 2023

Instructors

Dr. Raelene Crandall

Pronouns: She/Her/Hers
355 Newins-Ziegler Hall
raecrandall@ufl.edu
352-273-3416

And Many Others

Guest instructors from University of Florida, Austin Cary Forest, the Florida Forest Service, Ordway Swisher Biological Station, Tall Timbers Research Station, & U.S. Fish and Wildlife, etc.



Student Learning Outcomes

The basic objective of this course is to understand the principles, concepts, and issues surrounding fire, and to integrate this information into the context of natural resource management, protection, and stewardship. Students will plan and conduct several prescribed burns. Lab learning objectives are to:

Understand basic wildland fire behavior and smoke management

Describe fire as an ecological process, including effects on plants, animals, soil, water, and air

Demonstrate ability to safely participate in the execution of prescribed fires

Class Details

Credits: 1

Lab Hours: Fridays | Periods 4 - 9 (10:40 AM - 4:55 PM)

Lab Type: In the field or 222 Newins Ziegler Hall

Prerequisites: FOR 3153C or PCB 3034C or PCB 4044C, or the equivalent

Enrollment in FOR3214 Lecture (2 credits) is strongly encouraged

Grade Scale

A 100% to 94%

A- 93.99% to 90%

B+ 89.99% to 87%

B 86.99% to 84%

B- 83.99% to 80%

C+ 79.99% to 77%

C 76.99% to 74%

C- 73.99% to 70%

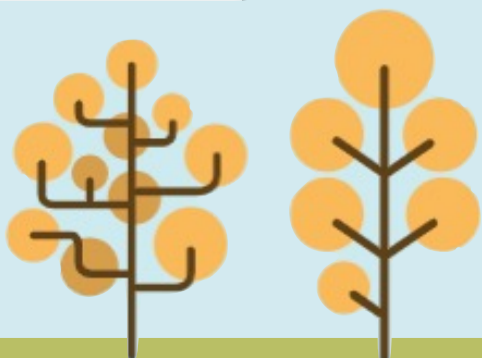
D+ 69.99% to 67%

D 66.99% to 64%

D- 63.99% to 61%

E 60.99% to 0%

For information on current UF policies for assigning grade points, see <https://catalog.ufl.edu/ugrad/current/regulations/info/grades.aspx>
<https://catalog.ufl.edu/graduate/regulations/#text>



"Fire is medicine."

Rick O'Rourke, Fire and Fuels Manager
Yurok Cultural Fire Management Council





Lab Format*

Expect to spend 6-8 Fridays in the field! They are not likely to be alternate weeks. If we can burn, we will. ALWAYS CHECK YOUR EMAIL THURSDAY NIGHT! I will post an announcement on Canvas before 8pm every Thursday indicating whether your section will be burning. If you are not prepared to burn (see below for Required Lab Materials), you will not participate and earn points for the lab.

When we are unable to burn, you will complete training and exercises in the field or in the lab on campus.

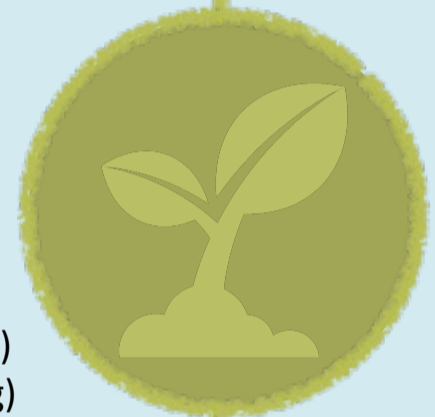
Brief Overview of Major Assignments

80% – Lab Exercises & Written Summaries of Prescribed Fires

- Inquiry-based lab exercises will require students to reach conclusions through problems, scenarios, and case studies. | Due by end of lab period unless otherwise instructed.
- Written summaries for each fire will include analyses of lessons learned and documentation of activities and outcomes from prescribed burns based on executed burn plan. | Due by 5pm the Thursday following the burn.

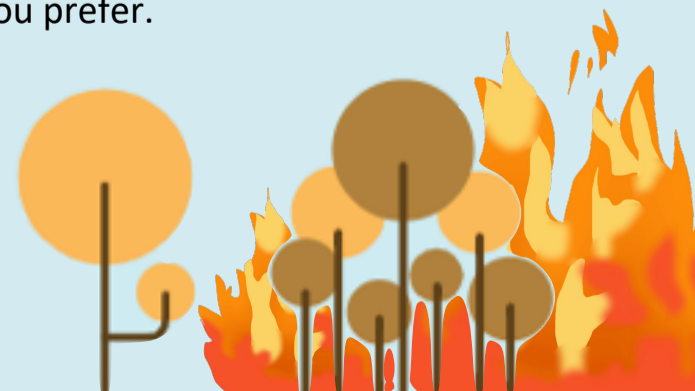
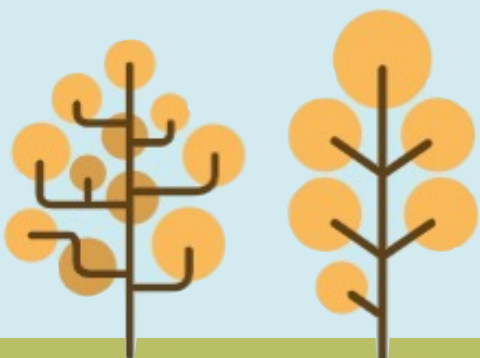
20% – Firefighter Type 2 | Due April 1

- The S-130: Firefighter Training online course (6-8 hours of training and field exercises)
- The S-190: Introduction to Wildland Fire Behavior online course (6-8 hours of training)
- The L-180: Human Factors in Wildland Fire Service online course (6-8 hours of training)
- The FEMA IS-100: Introduction to the Incident Command System online course (2-4 hours of training)
- The IS-700: an introduction to the National Incident Management System online course (4-5 hours of training)



Required Lab Materials



- Incidence Response Pocket Guide (IRPG) – Book provided in lab (if you do not have one already) and available online as a PDF.
- For prescribed burns, you will need at least TWO large bottles of water, snacks, 6 inch or higher leather boots (preferably with Vibram soles; absolutely no steel toes), eye protection, long pants, and cotton shirt. In addition, you may want a bandana for smoke protection. All clothing should be 100% cotton. Synthetic fabrics are a hazard on the fire line! Nomex shirts and pants, all-leather gloves, and hard hats will be provided at fires. Bring your own if you prefer.



*See Canvas page for additional details and grading rubrics.



Frequently Asked Questions

<p>When do you attend lab?</p>	<p>YOU CANNOT ATTEND LAB AT YOUR CONVENIENCE!</p> <p>The lab will be divided into two sections so there are fewer students attending in-person labs. Expect to attend about 8 in-person labs during the semester, depending on availability of burn days.</p>	<p>When not attending lab, you will complete online training to earn NWCG certificates.</p> <p>Do not expect to attend lab on alternate weeks. Burns will be divided between the two sections, so you may occasionally attend lab two weeks in a row.</p>
<p>What if you don't have fire boots?</p>	<p>You must acquire boots by purchasing or borrowing them. Boots must be all-leather, preferably with Vibram soles, with uppers that are 6 inches or higher; absolutely no steel toes</p>	<p>Dr. Crandall has a few pairs of boots for loan, mostly women's sizes. They must be signed out and returned at the end of the semester prior to final grades. Contact her if you need boots and cannot find someone to loan you a pair.</p>
<p>How will I communicate?</p>	<p>Canvas announcements will be used for class-related information. Make sure you are signed up to receive Canvas updates. Email will only be used for individual conversations.</p>	<p>Individual meetings are available upon request. Email instructor for an appointment. You are also welcome to drop by my office any time.</p> <p>Note: Email responses during evenings and weekends will be limited</p>
<p>What if you must miss a lab?</p>	<p>Contact your professor BEFORE you miss the lab (and provide <i>approved excuse</i>) to make arrangements. Some labs will not have an option for making up the material, but you will be able to complete a complementary assignment to earn credit for the missed lab.</p>	<p>Do not fall behind! Communicate with your classmates, visit the lab Canvas page, and turn in assignments on time.</p>
<p>What if you must miss many labs?</p>	<p>Communicate with your instructor as soon as you think you will need to miss multiple labs. I will work with you to develop a plan for completing the course without undue stress. Note that missing many labs may mean you will not earn NWCG certificates.</p>	<p>I care and want to help you succeed. Thus, if I notice you are falling behind or not attending lab, expect an email.</p> 
<p>What if you miss a due date?</p>	<p>Unless PRIOR arrangements have been made with your instructor, there will be a 10% grade reduction each day an assignment is late up to one week. Seven days after the due date, the submission page will lock and a zero will be assigned.</p>	<p>Start your online training early. Technical problems are the norm, not the exception when completing fire training. Expect to have issues. Additionally, it takes 1-2 days to be approved to log into some sites.</p>
<p>How can you provide <i>anonymous</i> feedback?</p>	<p>To provide comments and suggestions related to this lab, complete the survey at:</p> <p>https://ufl.qualtrics.com/jfe/form/SV_249BMRhY8yutRXf</p> <p>Password: SPRING2024</p> 	<p>To report a bias incident or hate crime to the UF Respect Team or UFPD, complete appropriate form at:</p> <p>https://respect.ufsa.ufl.edu/</p>



Resources to Help You Succeed

Policies & Requirements

This course plan and syllabus are subject to change in response to student and instructor needs. Any changes will be clearly communicated in advance through Canvas.

Diversity & Inclusion



Although natural resources and their management are important to all humans on Earth, modern natural resource management was built on a small subset of voices. This is why integrating a diverse set of experiences is important for a more comprehensive understanding of natural resource science and management. We acknowledge that it is possible that there may be both overt and covert biases in the material due to the lens with which it was written, even though the material is primarily of a scientific nature. We will strive to address these issues by including material from diverse perspectives when possible and by creating a classroom environment conducive to respectful, professional communication.

Just as in any professional environment, meaningful and constructive dialogue is expected in this class and requires a degree of mutual respect, willingness to listen, and tolerance of opposing points of view. Respect for individual differences and alternative viewpoints will be maintained at all times in this class. One's words and use of language should be temperate and within acceptable bounds of civility and decency. Friendly persuasion wins friends and influences people. Aggressively arguing your point often does the opposite and stops dialogue.

This course embraces the University of Florida's Non-Discrimination Policy, which reads,

The University shall actively promote equal opportunity policies and practices conforming to laws against discrimination. The University is committed to non-discrimination with respect to race, creed, color, religion, age, disability, sex, sexual orientation, gender identity and expression, marital status, national origin, political opinions or affiliations, genetic information and veteran status as protected under the Vietnam Era Veterans' Readjustment Assistance Act.

Inclusive Learning Environment

If you have questions or concerns about your rights and responsibilities for inclusive learning environment, please see the instructor or refer to the Office of Multicultural & Diversity Affairs website: <http://multicultural.ufl.edu>.

Course Logistics & Requirements

Students may access lectures, assignments, readings, and supporting materials through the course Canvas site as they become available.

Technology Requirements:

- A computer or mobile device with high-speed internet connection.
- A webcam, headset and/or microphone, and speakers.
- Latest version of web browser. Canvas supports only the two most recent versions of any given browser. [What browser am I using?](#)
- Installation of proctoring software may be required and will be provided if so.

Synchronous online sessions may be recorded. By sharing your video, screen, or audio during any synchronous online class sessions, you are consenting to being recorded for the benefit of students who cannot attend live as well as for class review during the current semester. If you have special circumstances or concerns about privacy, it is your responsibility to discuss it with your instructor.

Communication Courtesy & Professionalism

Just as in any professional environment, meaningful and constructive dialogue is expected in this class and requires a degree of mutual respect, willingness to listen, and tolerance of opposing points of view. **Respect for individual differences and alternative viewpoints will be maintained in this class at all times.** All members of the class are expected to follow rules of common courtesy, decency, and civility in all interactions. Failure to do so will not be tolerated and may result in loss of participation points and/or referral to the Dean of Students' Office.

Late Submissions & Make-up Requests

It is important that you be present for every class meeting, so you can interact with your classmates and participate in activities. It is the responsibility of the student to access online lectures, readings, quizzes, and exams and to maintain satisfactory progress in the course.

Requirements for class attendance and make-up exams, assignments and other work are consistent with university policies that can be found at: <https://catalog.ufl.edu/ugrad/current/regulations/info/attendance.aspx>

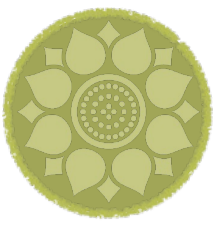
Computer or other hardware failures, except failure of the UF e-Learning system, will not excuse students for missing assignments. Any late submissions due to technical issues MUST be accompanied by the ticket number received from the Helpdesk when the problem was reported to them. The ticket number will document the time and date of the problem. You MUST e-mail your instructor within 24 hours of the technical difficulty if you wish to request consideration.

For computer, software compatibility, or access problems call the HELP DESK phone number at 352-392-HELP or 352- 392-4357, select option 2.

Help for Technical Difficulties

For issues with technical difficulties for e-learning in Canvas, please post your question to the Technical Help Discussion in your course, or contact the UF Help Desk at:

Learning-support@ufl.edu | (352) 392-HELP - select option 2 | <http://elearning.ufl.edu>
Library Help Desk support <https://uflib.ufl.edu/find/ask/>
SFRC Academic Hub <https://ufl.instructure.com/courses/303721>



More Resources to Help You Succeed

As a student at the University of Florida, you have committed yourself to uphold the Honor Code, which includes the following pledge: *"We, the members of the University of Florida community, pledge to hold ourselves and our peers to the highest standards of honesty and integrity."*

You are expected to exhibit behavior consistent with this commitment to the UF academic community, and on all work submitted for credit at the University of Florida, the following pledge is either required or implied: *"On my honor, I have neither given nor received unauthorized aid in doing this assignment."*

Academic Honesty Policy

It is assumed that you will complete all work independently in each course unless the instructor provides explicit permission for you to collaborate on course tasks (e.g., assignments, papers, quizzes, exams). Furthermore, as part of your obligation to uphold the Honor Code, you should report any condition that facilitates academic misconduct or appropriate personnel. It is your individual responsibility to know and comply with all university policies and procedures regarding academic integrity and the Student Honor Code. Violations of the Honor Code at the University of Florida will not be tolerated.

Violations will be reported to the Dean of Students Office for consideration of disciplinary action. For more information regarding the Student Honor Code, please see: <http://www.dso.ufl.edu/sccr/process/student-conduct-honor-code>.

Services for Students with Disabilities

The Disability Resource Center coordinates the needed accommodations of students with disabilities. This includes registering disabilities, recommending academic accommodations within the classroom, accessing special adaptive computer equipment, providing interpretation services and mediating faculty-student disability related issues. Students requesting classroom accommodation must first register with the Dean of Students Office. The Dean of Students Office will provide documentation to the student who must then provide this documentation to the Instructor when requesting accommodation. 0001 Reid Hall, 352-392-8565, disability.ufl.edu

UF/IFAS Field and Fork Food Pantry

The Pantry (<http://pantry.fieldandfork.ufl.edu>) is a resource on the University of Florida campus committed to eradicate food insecurity. Food insecurity is not having a reliable access to nutritious foods for yourself on a regular basis. If you, or anyone you know is experiencing food insecurity, the Pantry is a resource to visit. We offer non-perishable food, toiletries and fresh vegetables grown at the Field and Fork Gardens to provide a well-balanced diet. Protecting the privacy of its guests and providing food to those in need within our campus community is our priority. Our guests do not need any proof of need to use this resource, all that is needed is a Gator 1 ID to prove you are a current Student, Faculty or Staff at the University of Florida.

Student Life, Wellness, and Counseling Help

Students experiencing crises or personal problems that interfere with their general well-being are encouraged to use the university's counseling resources. The Counseling & Wellness Center provides confidential counseling services at no cost for currently enrolled students. Resources are available on campus for students having personal problems or lacking clear career or academic goals, which interfere with their academic performance.

Counseling and Wellness resources <http://www.counseling.ufl.edu/cwc/>
U Matter, We Care <http://www.umatter.ufl.edu/>
Career Connections Center <http://career.ufl.edu/>
Other resources are available at <http://www.distance.ufl.edu/getting-help> for online students.



Student assessment of instruction is an important part of efforts to improve teaching and learning.

Semester Evaluation Process

At approximately the mid-point of the semester, the School of Forest, Fisheries, and Geomatics Sciences will request anonymous feedback on student satisfaction on various aspects of this course. These surveys will be sent out through Canvas and are not required but encouraged. This is not the UF Faculty Evaluation!

At the end of the semester, students are expected to provide professional and respectful feedback on the quality of instruction in this course by completing course evaluations online via GatorEvals. Guidance on how to give feedback in a professional and respectful manner is available at <https://gatorevals.ua.ufl.edu/students/>. Students will be notified when the evaluation period opens and can complete evaluations through the email they receive from GatorEvals, or via <https://ufl.bluera.com/ufl/>. Summaries of course evaluation results are available to students at <https://gatorevals.ua.ufl.edu/public-results/>.

Student Complaint Process

The School of Forest, Fisheries, and Geomatic Sciences cares about your experience and we will make every effort to address course concerns. We request that all our students complete a course satisfaction survey each semester, which is a time for you to voice your thoughts on how your course is being delivered. You can also submit feedback anytime.

If you have a more urgent concern, your first point of contact should be the SFRC Academic Coordinator or the Graduate/Undergraduate Coordinator for the program offering the course. You may also submit a complaint directly to UF administration:

Students in online courses: <https://distance.ufl.edu/getting-help/>
Students in face-to-face courses: <https://registrar.ufl.edu/complaint.html>



Software Use

All faculty, staff and students at the university are required and expected to obey the laws and legal agreements governing software use. Failure to do so can lead to monetary damages and/or criminal penalties for the individual violator. Because such violations are also against university policies and rules, disciplinary action will be taken as appropriate.